



PELLI E TESSUTI
FABRICS AND LEATHERS

DIREZIONALI EXECUTIVE	AG	AR	AL	BR	BB	BL	CR	CT	CE	DB	ET	EP	FP	RE	RP	RS	AG/EP
VIVA	●	●		●	●	●		●	●	●	●	●	●				
YALTA															●		
EXPO.15 - SERIE EX	●	●	●	●	●	●	●	●	●	●	●	●	●	●		●	●
EXPO.15 - SERIE GX	●											●	●	●			
SUONI	●	●		●	●	●		●	●	●	●	●	●				
MODUS 150	●	●		●	●	●		●	●	●	●	●	●				
GEMINI	●	●	●	●	●	●		●	●	●	●	●	●				
MAEVA	●	●		●	●	●		●	●	●	●	●	●				
UNION	●	●	●	●	●	●		●	●	●	●	●	●				
AQABA	●	●	●	●	●	●		●	●	●	●	●	●				●
KIRUNA	●	●		●	●	●		●	●	●	●	●	●				

OPERATIVE TASK	AG	AR	AL	BR	BB	BL	CR	CT	CE	DB	ET	EP	FP	RE	RP	RS	AG/EP
ASSIA EV	●	●	●	●	●	●	●	●	●	●	●	●	●	●			
ASSIA CL	●	●	●	●	●	●	●	●	●	●	●	●	●	●			
EXPO LIGHT	●	●	●	●	●	●	●	●	●	●	●	●	●	●		●	
BURSA RETE EVO WHITE	●	●	●	●	●	●	●	●	●	●	●	●	●	●			
BURSA RETE EVO WHITE - SCH IMBOTTITO		●	●	●		●		●	●		●						
BURSA RETE EVO BLACK	●	●	●	●	●	●	●	●	●	●	●	●	●	●			
BURSA RETE EVO BLACK - SCH IMBOTTITO		●	●	●		●		●	●		●						
BURSA RETE	●	●	●	●	●	●	●	●	●	●	●	●	●		●		
AVILA BURSA	●	●	●	●	●	●	●	●	●	●	●	●	●				
MOREA COMFORT	●	●	●	●	●	●	●	●	●	●	●	●	●				
MALTA	●	●	●	●	●	●	●	●	●	●	●	●	●				
LYBRA	●	●	●	●	●	●	●	●	●	●	●	●	●				
SULKY	●	●	●	●	●	●	●	●	●	●	●	●	●				

OSPITI GUESTS	AG	AR	AL	BR	BB	BL	CR	CT	CE	DB	ET	EP	FP	RE	RP	RS	AG/EP
LIBERA LC	●	●	●	●	●	●	●	●	●	●	●	●	●				
GAIO	●	●	●	●	●	●		●	●	●	●	●	●				
WIZARD E GIAVA	●	●	●	●	●	●		●	●	●	●	●	●				
MALTA CONTRACT	●	●	●	●	●	●	●	●	●	●	●	●	●				
101 RETE	●	●	●	●	●	●	●	●	●	●	●	●	●	●			
SULKY 201	●	●	●	●	●	●	●	●	●	●	●	●	●				
TARIFA 101	●	●	●	●	●	●	●	●	●	●	●	●	●				

ATTESI WAITING AREAS	AG	AR	AL	BR	BB	BL	CR	CT	CE	DB	ET	EP	FP	RE	RP	RS	AG/EP
VIVA BENCH	●	●		●	●	●		●	●	●	●	●	●				
MEWA	●	●		●	●	●		●	●	●	●	●	●				
MODULIA	●	●	●	●	●	●		●	●	●	●	●	●				
OREOTTO	●	●	●	●	●	●		●	●	●	●	●	●				
MATIS	●	●	●	●	●	●		●	●	●	●	●	●				
ALIAS AM/AS	●	●	●	●	●	●		●	●	●	●	●	●				
ALIAS MODULI	●	●	●	●	●	●		●	●	●	●	●	●				
ALIAS POUF	●	●	●	●	●	●		●	●	●	●	●	●				
LIBERA LS	●	●	●	●	●	●	●	●	●	●	●	●	●				
LINEA R	●	●	●	●	●	●	●	●	●	●	●	●	●			●	
LINEA TRE	●	●	●	●	●	●	●	●	●	●	●	●	●				
LINEA M	●	●	●	●	●	●	●	●	●	●	●	●	●				

SU RICHIESTA ON DEMAND	AG	AR	AL	BR	BB	BL	CR	CT	CE	DB	ET	EP	FP	RE	RP	RS	AG/EP
MODUS 150 - GUEST CHAIR	●	●		●	●	●		●	●	●	●	●	●				
MODUS 600 - EXECUTIVE ARMCHAIR	●	●	●	●	●	●		●	●	●		●	●				
MODUS 600 - GUEST CHAIR	●	●	●	●	●	●		●	●	●		●	●				
GEMINI 1 - GUEST CHAIR	●	●	●	●	●	●		●	●	●	●	●	●				
GEMINI DATTOLO - STANDARD SWIVEL CHAIR	●	●	●	●	●	●	●	●	●	●		●	●				
GEMINI DATTOLO - GUEST CHAIR	●	●	●	●	●	●	●	●	●	●		●	●				
AVILA BURSA - STANDARD SWIVEL CHAIR	●	●	●	●	●	●	●	●	●	●	●	●	●				
AVILA BURSA - GUEST CHAIR	●	●	●	●	●	●	●	●	●	●	●	●	●				
MALTA - STANDARD SWIVEL CHAIR	●	●	●	●	●	●	●	●	●	●	●	●	●				
MALTA - GUEST CHAIR	●	●	●	●	●	●	●	●	●	●	●	●	●				
LYBRA - GUEST CHAIR	●	●	●	●	●	●	●	●	●	●	●	●	●				
SULKY - STANDARD SWIVEL CHAIR	●	●	●	●	●	●	●	●	●	●	●	●	●				
SULKY - GUEST CHAIR	●	●	●	●	●	●	●	●	●	●	●	●	●				

QUICK SERVICE	AG	AR	AL	BR	BB	BL	CR	CT	CE	DB	ET	EP	FP	RE	RP	RS	AG/EP
AQABA QUICK	●	●															
MAEVA QUICK		●															
EVO QUICK		●												●			
EXPO QUICK		●												●			
BURSA RETE QUICK		●												●			
BURSA QUICK		●															
T.R. QUICK		●															
T.R. 101 QUICK		●															
101 RETE QUICK		●												●			

● Disponibile Available

LEGENDA LEGEND

DATI TECNICI TECHNICAL DATA

1. CARATTERISTICHE
2. COMPOSIZIONE
3. PESO
4. REAZIONE AL FUOCO
5. ABRASIONE
6. SPESSORE

- EN**
1. FEATURES
 2. COMPOSITION
 3. WEIGHT
 4. FIRE TEST
 5. ABRASION
 6. THICKNESS

- FR**
1. CARACTÉRISTIQUES
 2. COMPOSITION
 3. POIDS
 4. RÉACTION AU FEU
 5. ABRASION
 6. ÉPAISSEUR

- ES**
1. CARACTERÍSTICAS
 2. COMPOSICIÓN
 3. PESO
 4. REACCIÓN AL FUEGO
 5. ABRASIÓN
 6. ESPESOR

AVVERTENZA NOTICE

I campioni illustrati in questo catalogo corrispondono agli originali. Eventuali differenze di colore sono dovute a motivi tecnici di stampa.

- EN** The sample colours pictured in this catalogue are representations of the originals. There could be slight colour differences due to the printing technique.
- FR** Le reproduction photographique des échantillons de tissus et cuir de cette catalogue a été réalisée d'après des originaux. Toute différence de teinte éventuelle est à imputer au procédé d'impression.
- ES** Las muestras impresas en este catalogo son copia de los originales. Las ligeras variaciones que puedan existir son debidas a la impresión.

CURA E MANUTENZIONE CARE AND MAINTENANCE



Usare con regolarità l'aspirapolvere a beccuccio liscio.

- EN** Use the vacuum cleaner with smooth spout regularly.
- FR** Utiliser régulièrement un aspirateur avec un embout souple.
- ES** Utilizar con regularidad una aspiradora con boquilla suave.



Pulire con un panno umido, sciacquare con acqua ed asciugare accuratamente. Usare solo detergente neutro diluito in acqua.

- EN** Clean with a damp cloth, rinse with water and dry thoroughly. Use only mild detergent diluted in water.
- FR** Nettoyer avec un chiffon humide, rincer à l'eau et sécher parfaitement. Utiliser seulement un détergent doux dilué dans l'eau.
- ES** Limpiar con un paño húmedo, aclarar con agua y secar minuciosamente. Utilizar solamente detergente suave diluido en agua.



Pulire con un panno morbido asciutto.

- EN** Clean regularly with dry soft cloth.
- FR** Nettoyer avec un chiffon doux et sec.
- ES** Limpiar con un paño suave seco.



In caso di macchie utilizzare uno smacchiatore spray per tessuti.

- EN** In the event stains use a stain remover spray for textile.
- FR** En cas de taches, utiliser un spray détachant pour textile.
- ES** Para eliminar manchas, utilizar un quitamanchas textil en spray.



In caso di macchie utilizzare uno smacchiatore per pelli.

- EN** In case of spots use a spot removal for leathers.
- FR** En cas de taches, utiliser un spray détachant pour cuir.
- ES** Para eliminar manchas, utilizar un quitamanchas para pelli.



Non usare sbiancanti al cloro.

- EN** Do not use chlorine bleach.
- FR** Ne pas utiliser d'eau de Javel.
- ES** No utilizar blanqueadores o lejía.



Non spazzolare.

- EN** Do not brush.
- FR** Ne pas brosser.
- ES** No cepillar.

PELLI E TESSUTI FABRICS AND LEATHERS

AG GUATEMALA

1. SIMILPELLE / VINYL
2. 88% PVC - 8% POLIESTERE - 4% COTONE
88% PVC - 8% POLYESTER - 4% COTTON
3. 910 GR./MTL / 910 GR./LM
4. CLASSE 1 (UNI 9175)
CLASS 1 (UNI 9175)
5. 100.000 CICLI (UNI EN ISO 12947)
100.000 TURNS (UNI EN ISO 12947)

PRODOTTO PRIVO DI FTALATI / PHTHALATE FREE

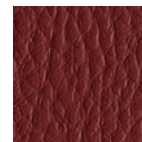
CURA E MANUTENZIONE CARE AND MAINTENANCE



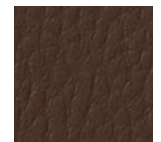
13AG22



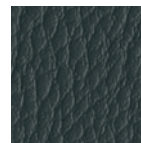
13AG46



13AG27



13AG98



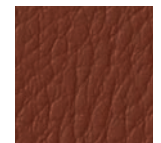
13AG21



13AG26



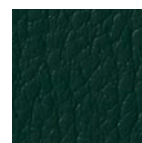
13AG07



13AG48



13AG31



13AG05



13AG20



13AG28



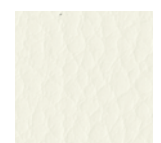
13AG71



13AG45



13AG30

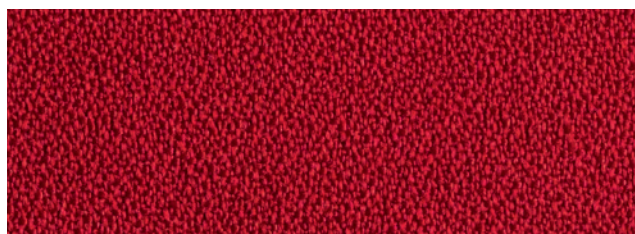


13AG00

AL LEIRIA

1. CREP / CREPE
2. 100% POLIESTERE / 100% POLYESTER
3. 350 GR./MTL / 350 GR./LM
4. CLASSE 1 (UNI 9175) EN 1021 (PARTI 1-2)
CLASS 1 (UNI 9175) EN 1021 (PART 1-2)
5. 150.000 CICLI (UNI EN ISO 12947)
150.000 TURNS (UNI EN ISO 12947)

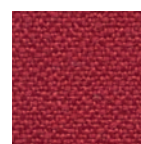
CURA E MANUTENZIONE CARE AND MAINTENANCE



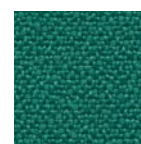
13AL02



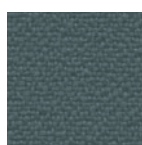
13AL26



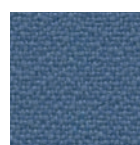
13AL07



13AL25



13AL12



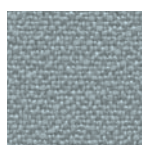
13AL06



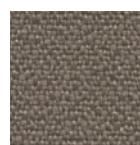
13AL20



13AL05



13AL21

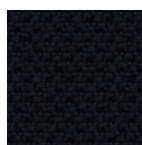
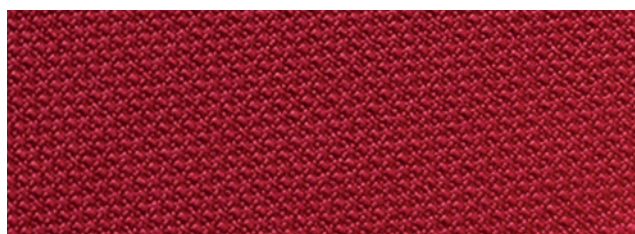


13AL03

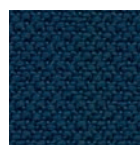
AR RADIO

1. TELA / CANVAS
2. 100% POLIESTERE FR / 100% POLYESTER FR
3. 450 GR./MTL / 450 GR./LM
4. EN 1021 (PARTI 1-2)
EN 1021 (PART 1-2)
5. 100.000 CICLI (UNI EN ISO 12947)
100.000 TURNS (UNI EN ISO 12947)

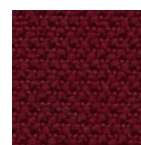
CURA E MANUTENZIONE CARE AND MAINTENANCE



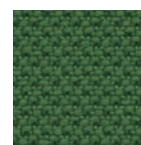
13AR02



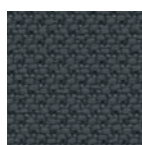
13AR36



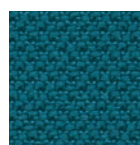
13AR34



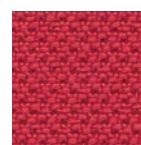
13AR35



13AR52



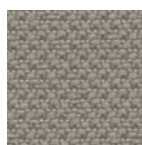
13AR26



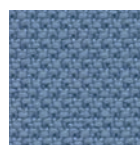
13AR17



13AR45



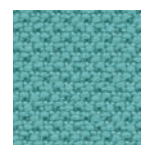
13AR13



13AR16



13AR40



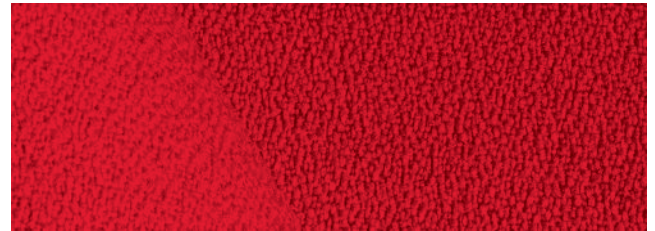
13AR25

PELLI E TESSUTI FABRICS AND LEATHERS

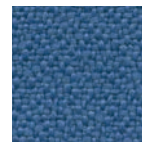
BB BELEM

1. TESSUTO ANTIBATTERICO / ANTIBACTERIAL FABRIC
2. 100% POLIESTERE TREVIRA CS / 100% POLYESTER TREVIRA CS
3. 490 GR./MTL / 490 GR./LM
4. CLASSE 1 (UNI 9175)
CLASS 1 (UNI 9175)
5. 100.000 CICLI (UNI EN ISO 12947)
100.000 TURNS (UNI EN ISO 12947)

CURA E MANUTENZIONE CARE AND MAINTENANCE



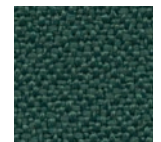
13BB02



13BB26



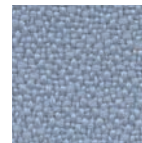
13BB07



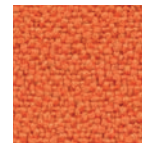
13BB35



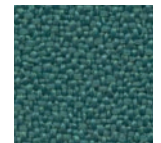
13BB31



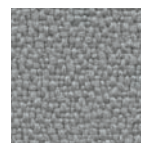
13BB56



13BB20



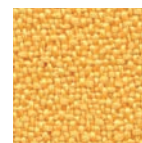
13BB75



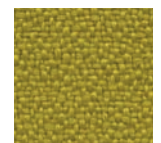
13BB12



13BB03



13BB30

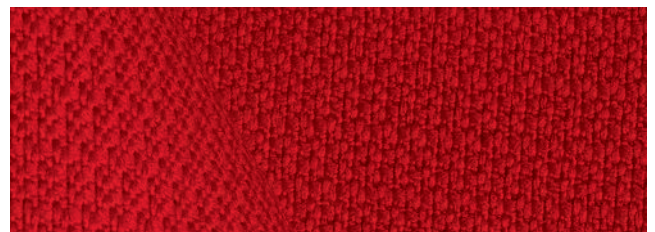


13BB15

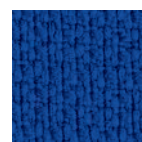
BL LAGOS

1. TESSUTO A INTRECCI / VEAVES FABRIC
2. 100% POLIESTERE FR RICICLATO
100% POLYESTER FR RECYCLED
3. 470 GR./MTL / 470 GR./LM
4. CLASSE 1 (UNI 9175) EN 1021 (PARTI 1-2)
CLASS 1 (UNI 9175) EN 1021 (PART 1-2)
5. 50.000 CICLI (UNI EN ISO 12947)
50.000 TURNS (UNI EN ISO 12947)

CURA E MANUTENZIONE CARE AND MAINTENANCE



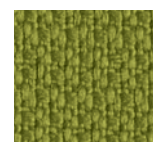
13BL02



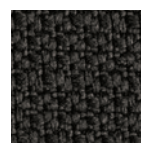
13BL26



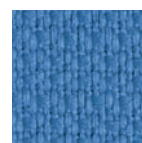
13BL34



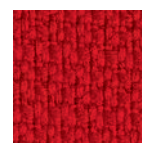
13BL05



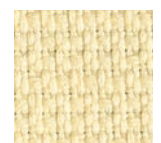
13BL21



13BL16



13BL07



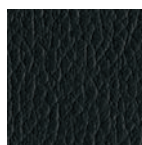
13BL10

BR RIO

1. SIMILPELLE ANTIBATTERICA / VINYL ANTIBACTERIAL TREATMENT
2. 91% PVC - 9% POLIAMMIDE
91% PVC - 9% POLYAMIDE
3. 994 GR./MTL / 994 GR./LM
4. CLASSE 1 (UNI 9175)
CLASS 1 (UNI 9175)
5. UNI 4818 15 (METODO A)
UNI 4818 15 (METHOD A)

PRODOTTO PRIVO DI FTALATI / PHTHALATE FREE

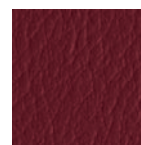
CURA E MANUTENZIONE CARE AND MAINTENANCE



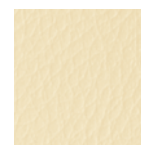
13BR02



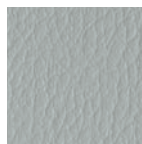
13BR06



13BR34



13BR10



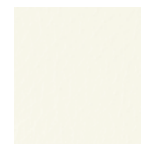
13BR21



13BR16



13BR07

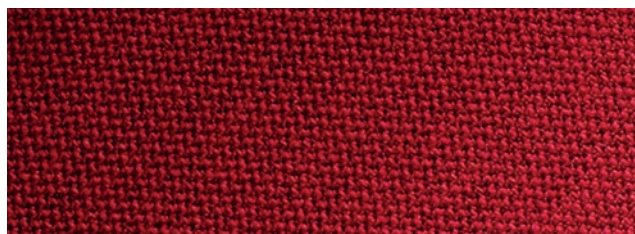


13BR00

CE ERA

1. TELA / CANVAS
2. 100% POLIESTERE
100% POLYESTER
3. 490 GR./MTL / 490 GR./LM
4. EN 1021 (PARTI 1-2)
EN 1021 (PART 1-2)
5. 10.000 CICLI (UNI EN ISO 12947)
100.000 TURNS (UNI EN ISO 12947)

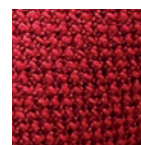
CURA E MANUTENZIONE CARE AND MAINTENANCE



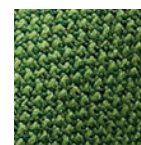
13CE19



13CE06



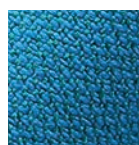
13CE07



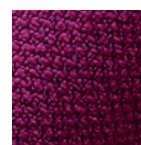
13CE15



13CE12



13CE16



13CE09



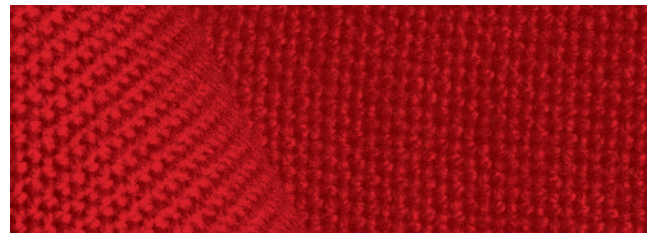
13CE30

PELLI E TESSUTI FABRICS AND LEATHERS

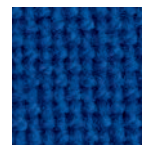
CT TREVI

1. TELA. CANVAS
2. 100% POLIESTERE TREVIRA CS
100% POLYESTER TREVIRA CS
3. 630 GR./MTL / 630 GR./LM
4. CLASSE 1 (UNI 9175) EN 1021 (PARTI 1-2)
CLASS 1 (UNI 9175) EN 1021 (PART 1-2)
5. 100.000 CICLI (UNI EN ISO 12947)
100.000 TURNS (UNI EN ISO 12947)

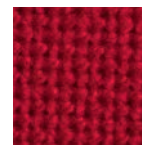
CURA E MANUTENZIONE CARE AND MAINTENANCE



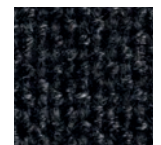
13CT02



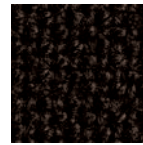
13CT16



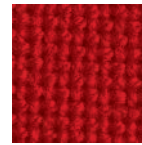
13CT47



13CT32



13CT03



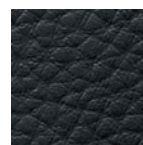
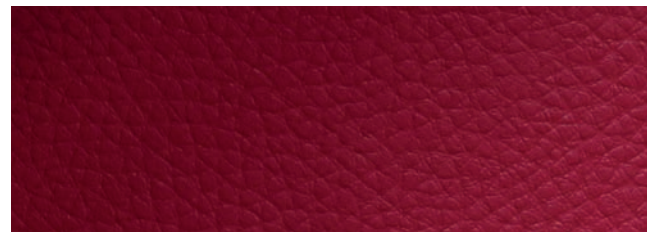
13CT07

CR MERIDA IGNIFUGO

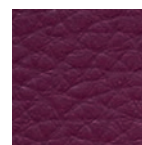
1. SIMILPELLE TRASPIRANTE / BREATHABLE VINYL
2. 41% POLIURETANO - 18% POLIESTERE - 41% COTONE
41% POLYURETHANE - 18% POLYESTER - 41% COTTON
3. 560 GR./MTL / 560 GR./LM
4. CLASSE 1 (UNI 9175)
CLASS 1 (UNI 9175)
5. 100.000 CICLI (UNI EN ISO 12947)
100.000 TURNS (UNI EN ISO 12947)

PRODOTTO PRIVO DI FTALATI / PHTHALATE FREE

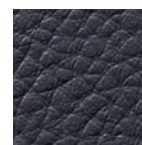
CURA E MANUTENZIONE CARE AND MAINTENANCE



13CR32



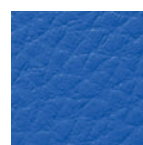
13CR44



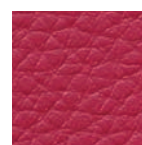
13CR53



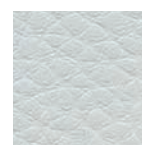
13CR52



13CR66



13CR67

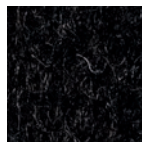
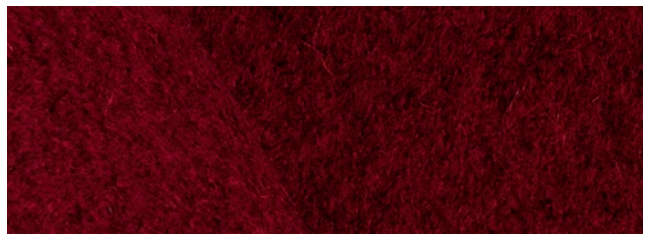


13CR11

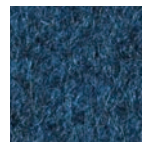
DB BOGOTÀ

1. LANA / WOOL
2. 100% LANA
100% WOOL
3. 825 GR./MTL / 825 GR./LM
4. EN 1021 (PARTI 1-2)
EN 1021 (PART 1-2)
5. 60.000 CICLI (UNI EN ISO 12947)
60.000 TURNS (UNI EN ISO 12947)

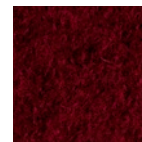
CURA E MANUTENZIONE CARE AND MAINTENANCE



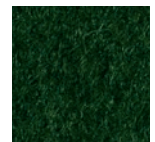
13DB02



13DB06



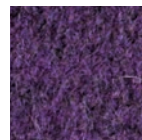
13DB04



13DB05



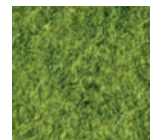
13DB12



13DB09



13DB30



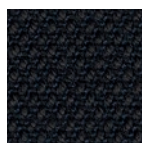
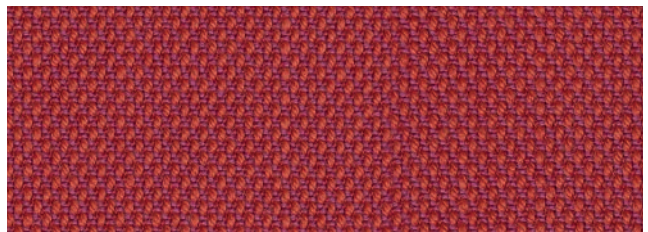
13DB15

ET STEELCUT TRIO 3

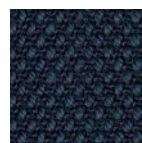
by KVADRAT

1. LANA / WOOL
2. 90% LANA - 10% NYLON
90% WOOL - 10% NYLON
3. 770 GR./MTL / 770 GR./LM
4. CLASSE 1 (UNI 9175) EN 1021 (PARTI 1-2)
CLASS 1 (UNI 9175) EN 1021 (PART 1- 2)
5. 100.000 CICLI (UNI EN ISO 12947)
100.000 TURNS (UNI EN ISO 12947)

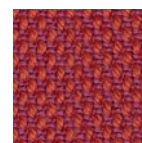
CURA E MANUTENZIONE CARE AND MAINTENANCE



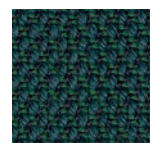
13ET02



13ET36



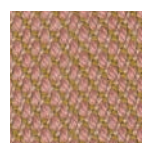
13ET07



13ET35



13ET08



13ET03

PELLI E TESSUTI FABRICS AND LEATHERS

EP PELLE NATURALE

1. VERA PELLE BOVINA, CONCIATA AL CROMO, TINTA IN BOTTE ALL'ANILINA, SMERIGLIATA E RIFINITA CON RESINE POLIURETANICHE / OX HIDES, CHROME TANNAGE, ANILINE-DYED, BUFFED AND FINISHED WITH POLYURETHANE RESINS.
6. 0.9 / 1.0 MM.

AVVERTENZA: LE IRREGOLARITÀ NATURALI DELLA PELLE, PUNTURE D'INSETTI, PICCOLE CICATRICI E VARIAZIONI DI COLORE CONFERMANO L'AUTENTICITÀ DEL MATERIALE, PERTANTO NON SONO MOTIVO DI RECLAMO.
NOTICE: NATURAL FEATURES SUCH AS INSECT BITES, SMALL DEFORMITIES AND COLOR SHADING CONFIRM THE LEATHER'S AUTHENTIC CHARACTER AND ARE NOT GROUNDS FOR COMPLAINT.

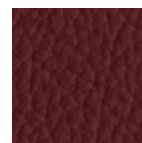
CURA E MANUTENZIONE CARE AND MAINTENANCE



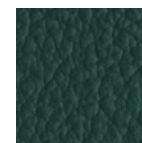
13EP02



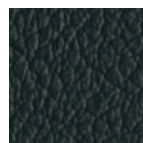
13EP06



13EP34



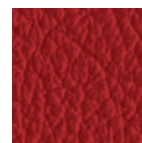
13EP05



13EP11



13EP17



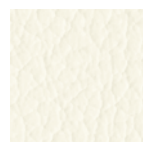
13EP07



13EP10



13EP23



13EP00

FP PELLE EXTRA

1. VERA PELLE BOVINA FIORE, CONCIATA AL CROMO, TINTA IN BOTTE ALL'ANILINA, GRANA NATURALE / OX HIDES, CHROME TANNAGE, ANILINE-DYED, NATURAL GRAIN.
6. 1.3 / 1.5 MM

AVVERTENZA: LE IRREGOLARITÀ NATURALI DELLA PELLE, PUNTURE D'INSETTI, PICCOLE CICATRICI E VARIAZIONI DI COLORE CONFERMANO L'AUTENTICITÀ DEL MATERIALE, PERTANTO NON SONO MOTIVO DI RECLAMO.
NOTICE: NATURAL FEATURES SUCH AS INSECT BITES, SMALL DEFORMITIES AND COLOR SHADING CONFIRM THE LEATHER'S AUTHENTIC CHARACTER AND ARE NOT GROUNDS FOR COMPLAINT.

CURA E MANUTENZIONE CARE AND MAINTENANCE



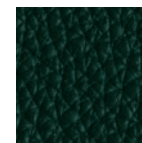
13FP32



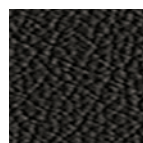
13FP06



13FP04



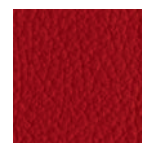
13FP05



13FP11



13FP03



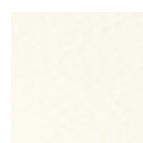
13FP07



13FP28



13FP12



13FP10

AG/EP PELLE E SIMILPELLE

1. RIVESTIMENTO COMBINATO PELLE CAT. EP E SIMILPELLE CAT. AG
COMBINATION UPHOLSTERY LEATHER, CAT. EP AND VINYL CAT. AG

DISPONIBILE PER AQABA.
AVAILABLE FOR AQABA.



02 NERO

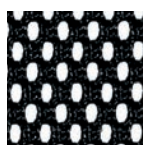
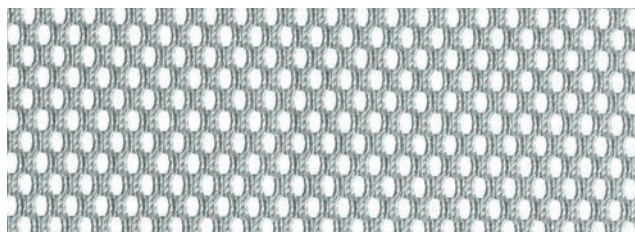
RE RETE

1. TESSUTO TECNICO / TECHNICAL FABRIC
2. 100% POLIESTERE
100% POLYESTER
3. 430 GR./MTL / 430 GR./LM
4. CLASSE 1 (UNI 9175) SOLO PER CODICE 13R1IM
CLASS 1 (UNI 9175) ONLY FOR CODE 13R1IM
5. 100.000 CICLI (UNI EN ISO 12947)
100.000 TURNS (UNI EN ISO 12947)

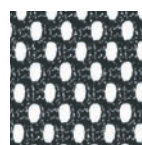
DISPONIBILE PER EXPO, EXPO LIGHT, BURSA RETE EVOLUTION,
101 RETE, LINEA R E ASSIA.

AVAILABLE FOR EXPO, EXPO LIGHT, BURSA RETE EVOLUTION,
101 RETE, LINEA R AND ASSIA.

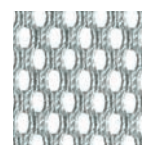
CURA E MANUTENZIONE CARE AND MAINTENANCE



13RETE - 13R1IM



13RE_P



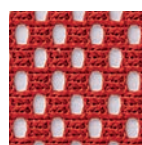
13RE_G



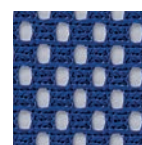
13RE_B



13RE_M



13RE_R



13RE_W



13RETV

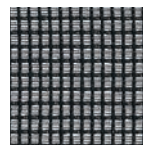
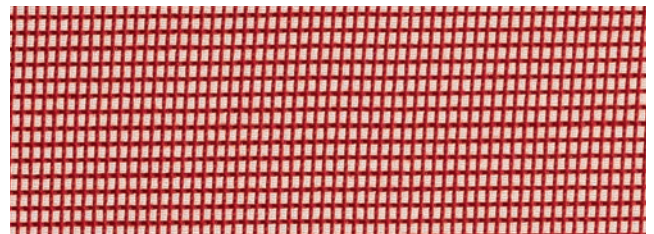
PELLI E TESSUTI FABRICS AND LEATHERS

RS RETE

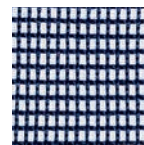
1. TESSUTO TECNICO / TECHNICAL FABRIC
2. 97% POLIESTERE - 2% POLIAMMIDE - 1% ELASTANE
97% POLYESTER - 2% POLYAMIDE - 1% ELASTHAN
3. 370 GR./MTL / 370 GR./LM
4. UNI 1021 (PARTE 1)
UNI 1021 (PART 1)
5. 30.000 CICLI (UNI EN ISO 12947)
30.000 TURNS (UNI EN ISO 12947)

DISPONIBILE PER EXPO E EXPO LIGHT.
AVAILABLE FOR EXPO AND EXPO LIGHT.

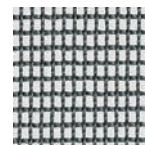
CURA E MANUTENZIONE CARE AND MAINTENANCE



13RS02



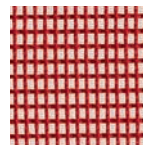
13RS06



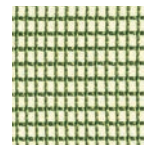
13RS21



13RS00



13RS07



13RS05

RP RETE

1. TESSUTO TECNICO / TECHNICAL FABRIC
2. 97% POLIESTERE - 2% POLIAMMIDE - 1% ELASTANE
97% POLYESTER - 2% POLYAMIDE - 1% ELASTHAN
3. 370 GR./MTL / 370 GR./LM
4. UNI 1021 (PARTE 1)
UNI 1021 (PART 1)
5. 30.000 CICLI (UNI EN ISO 12947)
30.000 TURNS (UNI EN ISO 12947)

DISPONIBILE PER YALTA.
AVAILABLE FOR YALTA.

CURA E MANUTENZIONE CARE AND MAINTENANCE



13RP02



13RP10



SUPERFICI
SURFACES

SUPERFICI SURFACES

PLASTICA PLASTIC

*

1. POLIPROPILENE O POLIAMMIDE,
TRATTAMENTO SUPERFICIALE GOFRATO
ANTIGRAFFIO.
POLYPROPYLENE OR POLYAMIDE,
ANTI-SCRATCH EMBOSSED FINISH.
7. UNI 10782

CURA E MANUTENZIONE CARE AND MAINTENANCE



NERO
BLACK



GRIGIO
GREY RAL 7040



BIANCO
WHITE RAL 9003

PLASTICA IGNIFUGA FIREPROOF PLASTIC

**

1. POLIPROPILENE FR CARICATO CON FV.
POLYPROPYLENE FR WITH FV.
7. CLASSE 1 (UNI 9175) /
CLASS 1 (UNI 9175)

CURA E MANUTENZIONE CARE AND MAINTENANCE



ANTRACITE
ANTHRACITE



TORTORA
DOVE GREY RAL 1019



BIANCO
WHITE RAL 9003



GRIGIO-BLU AVIO
AZURE-GREY RAL 5014



ROSSO MARRONE
RED BROWN RAL 8029



VERDE OLIVA
OLIVE GREEN RAL 6003

PLASTICA PCR PCR PLASTIC

**

1. POLIPROPILENE DA RICICLO
POST CONSUMO
POST-CONSUMER RECYCLED
POLYPROPYLENE
7. UNI 10782

CURA E MANUTENZIONE CARE AND MAINTENANCE



GRIGIO CEMENTO
CONCRETE GREY RAL 9006

SUPERFICI SURFACES

CROMATURA METALLO METAL CHROMIUM PLATING

1. TRATTAMENTO GALVANICO
CON APPLICAZIONE DI NICHEL E CROMO,
SPESSORE 30/50 µ, FINITURA LUCIDA.
NICKEL AND CHROMIUM PLATING FIXED
WITH GALVANIC TREATMENT, THICKNESS
30/50 µ, GLOSSY FINISH.
7. UNI 10782

CURA E MANUTENZIONE CARE AND MAINTENANCE



CROMATO / CHROMED

VERNICIATURA METALLO METAL COATING

*

1. POLVERI EPOSSI-POLIESTERE
TERMOINDURENTI APPLICATE
ELETTROSTATICAMENTE, SPESSORE 70/90 µ,
GLOSS 2-10, FINITURA BUCCIATA
ANTIGRAFFIO.
EPOXY-POLYESTER THERMOSETTING
POWDERS ELECTROSTATICALLY FIXED,
THICKNESS 70/90 µ, GLOSS 2-10,
ANTI-SCRATCH EMBOSSED FINISH.
7. UNI EN ISO 9227

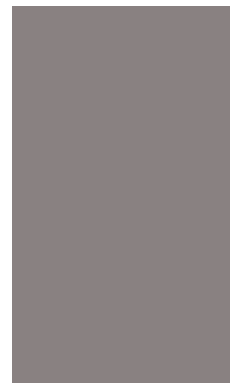
CURA E MANUTENZIONE CARE AND MAINTENANCE



NERO
BLACK



GRIGIO ARGENTO
SILVER GREY RAL 9006



TORTORA
DOVE GREY RAL 1019



BIANCO
WHITE RAL 9016



BRONZO
BRONZE

NOTE NOTES

* I colori disponibili per ogni linea di prodotto sono elencati nel catalogo generale e nel listino prezzi / The available colours for each product line are listed in the general catalogue and in the price list

** Colori disponibili solo per serie LIBERA LI/LC e serie LIBERA LP/LS / Colours available only for line LIBERA LI/LC and line LIBERA LP/LS

VAGHI s.r.l. via Brughetti 16/18 20813 Bovisio Masciago (MB)
T +39 0362 591404 info@vagli.com

VAGHI.COM